

Snow DEFENDER®

6500



The patented Snow Defender® 6500 is designed for standing seam roofs and is the snow guard of choice for many roofers. It fits standing seams up to 3/8" wide and most 1" through 1 3/4" seam heights.

This strong design, made with 304 stainless, and patented non-piercing clamping attachment allows snow retention on most standing seam profiles. It's available in 40 plus colors that match with popular standing seam roof colors. Copper plated also available.



Copper Plated Also Available

This is a regular stainless mill finish snow guard that has been copper plated and polished. Stainless and copper work together making this snow guard different than our normal powder coated copper snowguard. Our copper plated snow guard will patina over time, along with your real copper metal roof!

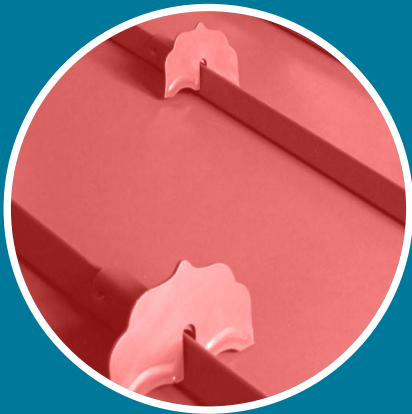
Snow DEFENDER®

6500

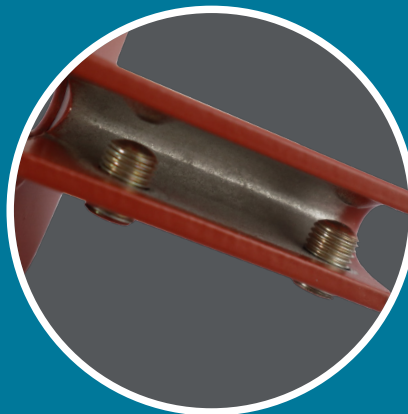


Item #	Description	Pcs/Bx	Lb/Bx
SD65	Snow Defender® 6500	32	30.9
SDCOP65	Snow Defender® 6500 Copper Plated	32	31.6

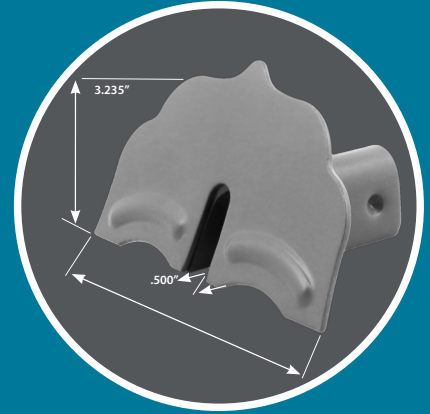
For standing seam roofing: fits standing seams up to 3/8" wide, and most 1" through 1- 3/4" seam heights.



Use For Standing Seam Panels



Does Not Penetrate Metal

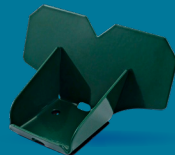


Innovative Design

Also Available:



Snow DEFENDER®
4500



Snow DEFENDER®
1500



Snow DEFENDER®
7500 DECO™



Snow DEFENDER®
85RF DECO™